

PLANS OF MANAGEMENT FOR WETLANDS

MASON PARK PARKLANDS AT SYDNEY OLYMPIC PARK

WET Workshop
Sydney Olympic Park Authority
26 March 2010

SANDY HOY



OUTLINE

- ❑ **Process and outcomes of Plans of Management**

- ❑ **Case studies:**

Mason Park Wetland

Badu Mangroves at Sydney Olympic Park

AIMS

- ❑ **show that preparing Plans of Management vary by land owner, location, applicable legislation, significance, resources**
- ❑ **present two case studies of Plans of Management for local significant wetlands**
- ❑ **tie together presentations of various aspects of Plans of Management yesterday**
- ❑ **set you up for group activities later today**

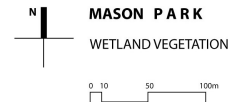
MASON PARK WETLAND



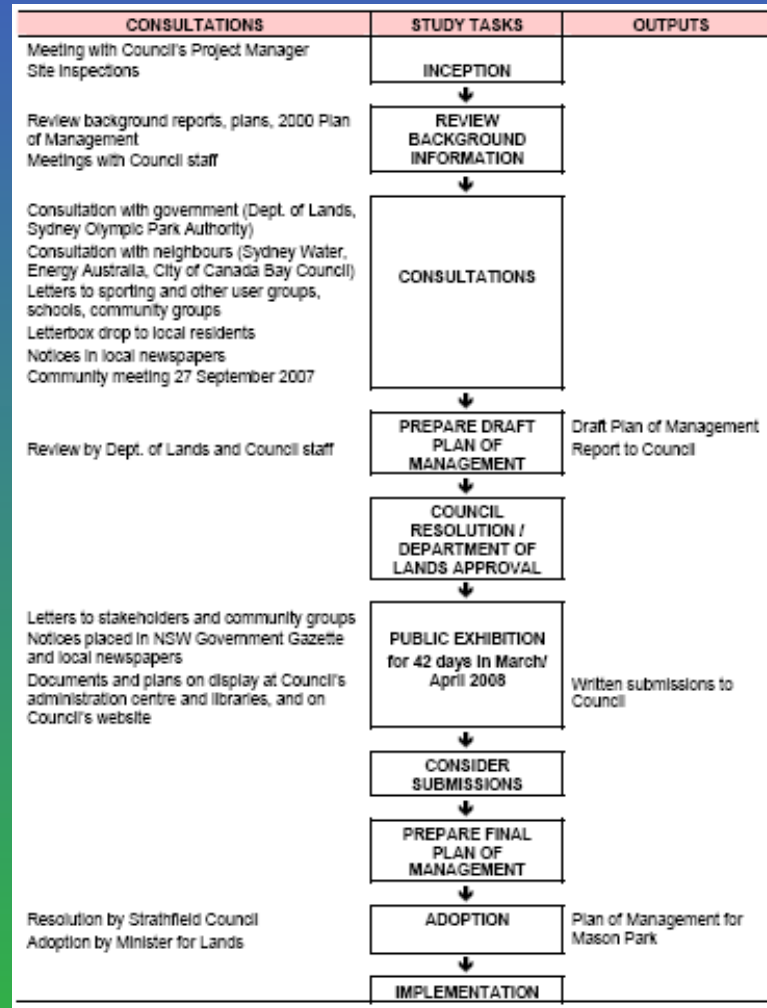
MASON PARK WETLAND



- Mangroves
- *Sarcocornia* & *Suaeda*
- *Sarcocornia*
- Scattered *Sarcocornia*
- *Juncus acutus*
- *Juncus kraussii*
- Brackish Marsh
- Open Water
- Plantings
- General Wetland Area



PROCESS OF PREPARING MASON PARK PLAN OF MANAGEMENT



1. REVIEW OF BACKGROUND INFORMATION

including:

- previous Plan of Management (2000)**
- Council files**
- Contextual planning – Powells Creek corridor**
- previous research on wetland**



2 CONSULTATION WITH STAKEHOLDERS

- ❑ **Land owners – Council and Crown**
- ❑ **Neighbours:**
 - City of Canada Bay Council - letter**
 - Sydney Water – letter**
 - Sydney Olympic Park Authority**
 - residents – letterbox drop – information, survey**
- ❑ **Users**
- ❑ **Community – community meeting**

3 PREPARE DRAFT PLAN OF MANAGEMENT

- 1 Introduction – background, objectives, process**
- 2 Existing situation – history, significance, management, physical description, ownership, use**
- 3 Planning context: legislation, local planning**
- 4 Values, roles and objectives**
- 5 Action plan tables: by value**
- 6 Implementation and review: permitted uses developments, leases and licences, funding, reporting, review**

4 APPROVALS

- ❑ Council
- ❑ Department of Lands



5 PUBLIC EXHIBITION

- ❑ display at Council, libraries, website
- ❑ Government Gazette

6 CONSIDER SUBMISSIONS

- ❑ 2 received – SOPA and a resident

7 PREPARE FINAL PLAN OF MANAGEMENT

- ❑ make amendments
- ❑ produce final Plan of Management

OUTCOMES

- ❑ **Since mid-2008 Strathfield Council has implemented actions in the Plan of Management:**
 - bush regeneration and restoration
 - signage
 - carpark upgrade
 - stormwater harvesting project for irrigation

- ❑ **High priority action to install a second inlet weir depends on Sydney Water plans for Powells Creek canal and corridor.**

PARKLANDS AT SYDNEY OLYMPIC PARK



BACKGROUND

- ❑ Prepared in 2002 and adopted by Ministers for Sydney Olympic Park and the Environment in January 2003
- ❑ First Plan of Management for the Parklands
- ❑ Parklands divided into 17 precincts. Badu Mangroves is one precinct.



PROCESS

- ❑ **preparation of “Parklands 2020” concept plan for the Parklands**
- ❑ **consultants prepare Statements of Significance for 17 precincts, assembling and summarising background information on the existing situation, significance, and issues**
- ❑ **consult with SOPA Board, Parklands Advisory Committee and SOPA staff, users, lease and licence holders, NPWS**

PROCESS

- **Stage 1 community consultation:**
 - **24-page booklet to 2,000 stakeholders and interested community members**
 - **summary leaflet to households within 5km**
 - **media release to local and NESB press**
 - **telephone hotline and interpreter service**
 - **information on SOPA website**

PROCESS

continued ...

- ❑ **prepare Draft Plan of Management and publicity material**
- ❑ **public exhibition and Stage 2 consultations:**
 - **32-page summary booklet to stakeholders and community members and residents within 5km**
 - **displays with comments sheets at 16 locations**
 - **websites SOPA and NPWS**
 - **media liaison**
- ❑ **prepare Public Representations Report**
- ❑ **prepare final Plan of Management**
- ❑ **adoption by Ministers**



CONTENTS

- ❑ **650 pages + appendices**
- ❑ **1. General Scheme of Operations:
objectives for Parklands, legislation, corporate framework, policies, guidelines, values, issues, principles and guidelines to resolve issues, Parklands Management**
- 2. Local Scheme of Operations for each precinct:
conceptual importance (values, objectives), physical characteristics, use and function, management issues, management regime (uses and structures, carrying capacity, performance targets and measuring performance)**



OUTCOMES

Since 2003:

- various detailed Wetland Management Plans prepared by SOPA.**
- Draft Parklands Plan of Management (2010)**



OUTCOMES

Draft Parklands Plan of Management (2010):

- on public exhibition now**
- Shortened to 65 pages**
- combines Parklands wetland precincts into “Wetlands and Waterways”**

Part 1: General Arrangements

Part 2: Public access and land use regime **- public use controls**

Part 3: Management framework **- planning, principles, guidelines, priorities**

Part 4: Appendices



LESSONS

- ❑ **Understand your wetland as much as possible**
- ❑ **Involve the “best people” for specialist advice**
- ❑ **Consult early and widely throughout process as appropriate**
- ❑ **Even if you don't know the answer to address an issue, put in the Action Plan to make sure it is addressed**



REFERENCES

❑ Mason Park Plan of Management

www.strathfield.nsw.gov.au

Parks and Recreation
Plans of Management

❑ Plan of Management for the Parklands at Sydney Olympic Park (2003)

www.sydneyolympicpark.com.au

Corporate
Document library
Parklands Plan of Management

❑ Draft Parklands Plan of Management (2010)

www.sydneyolympicpark.com.au

Corporate
Notices
Parklands PoM



THANKS TO:

- ❑ **Swapnan Paul, Sydney Olympic Park Authority**
- ❑ **Bernadette Murray, Strathfield Council**

